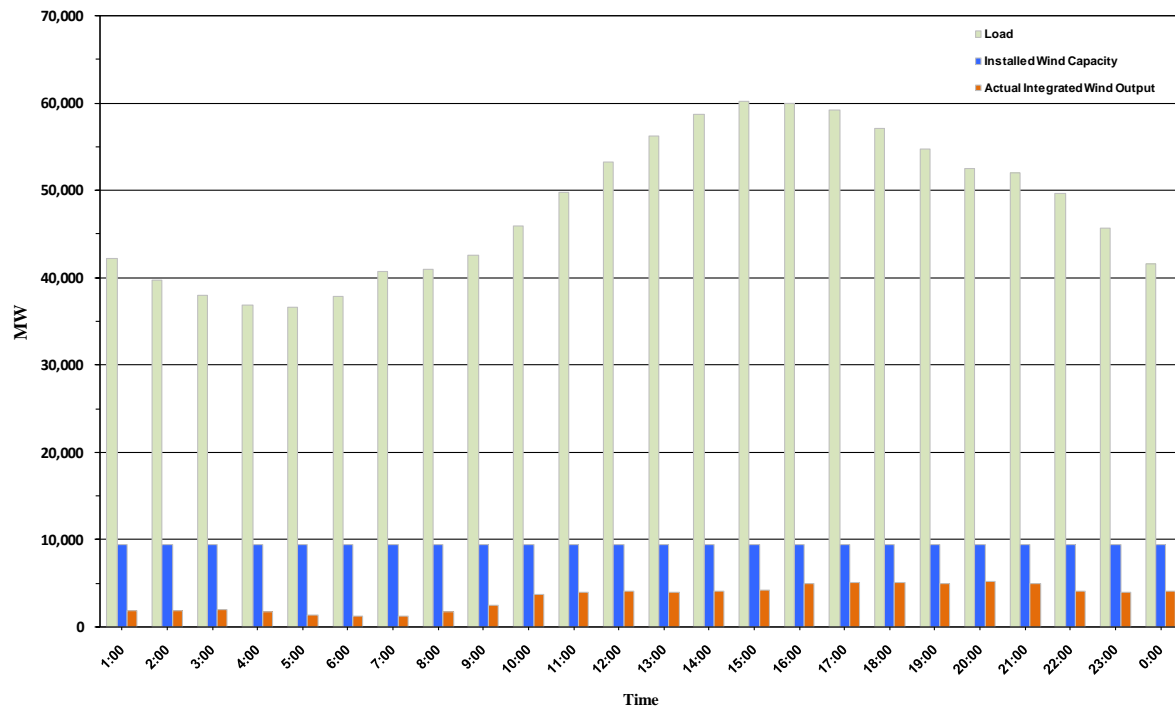




ERCOT Grid Operations Wind Penetration Report: 08/24/10

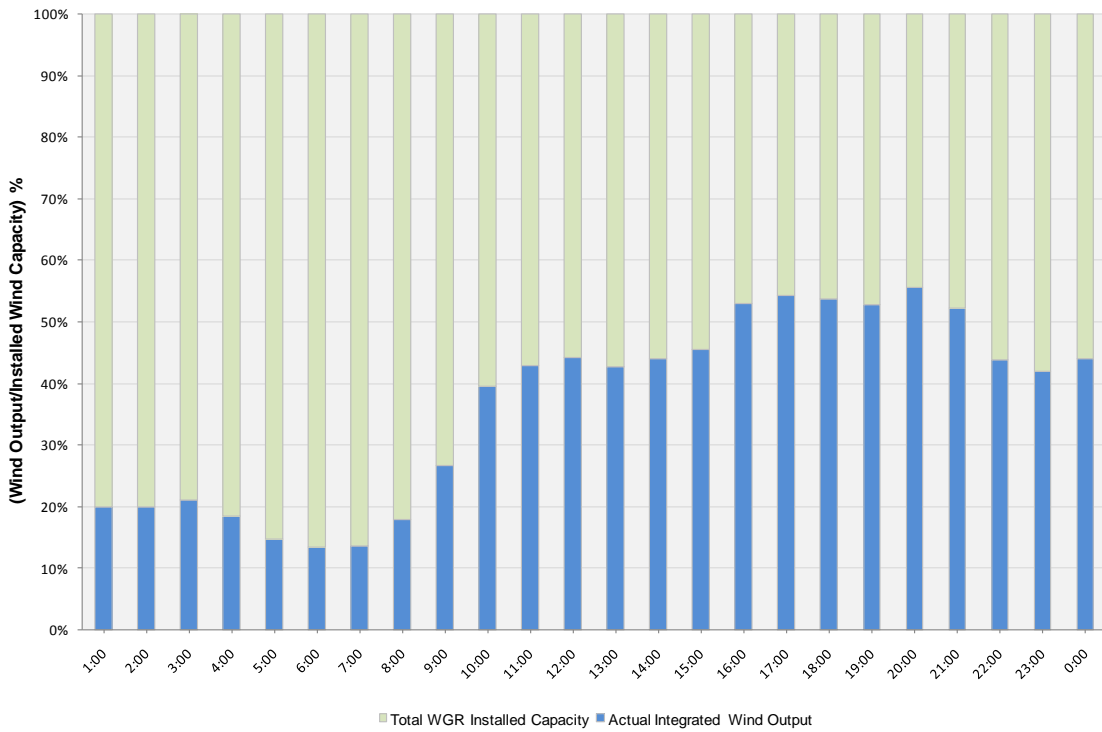
Peak Load	60,217 MW
Load Peak Hour	15
Wind Record 06/12/10	7016 MW
Max Wind value	5405 MW
Wind Peak Hour	19:37:40
Wind Penetration %	10.32

Hourly Average Actual Load vs. Actual Wind Output
08-24-2010

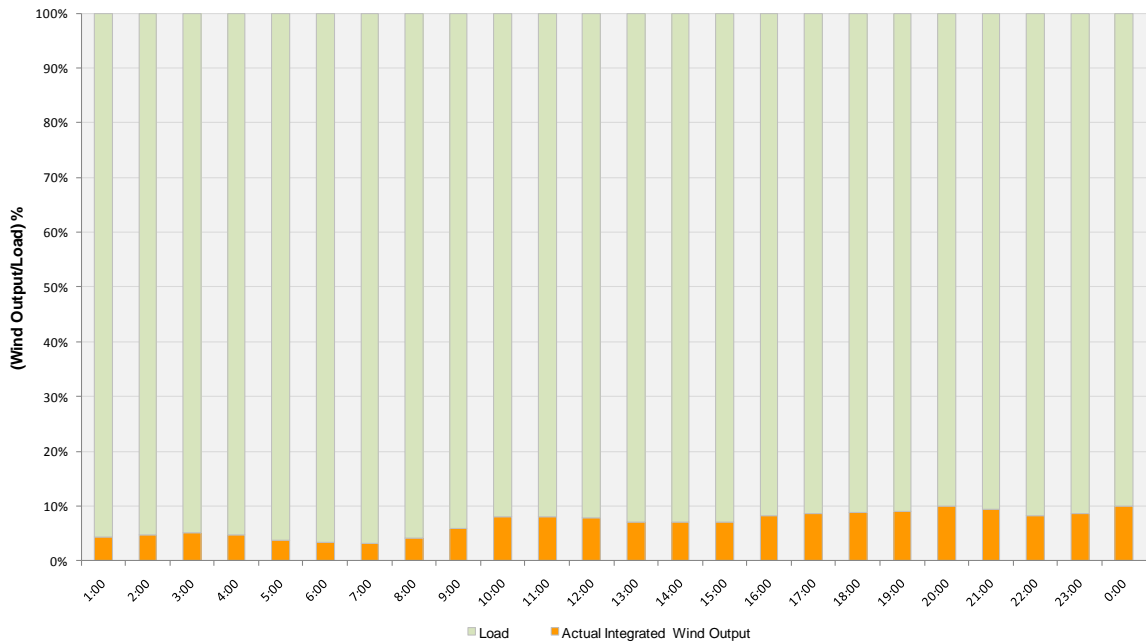




Actual Wind Output as a Percentage of the Total Installed Wind Capacity
08-24-2010



Actual Wind Output as a Percentage of the ERCOT Load
08-24-2010





ERCOT Load vs. Actual Wind Output 08/17/10 - 08/24/10

